

2011 Catalog

EFFECTIVE JANUARY 1, 2011

INTRODUCING THE

Innovator Series

by **waterMaze**



ISO 9001 REGISTERED ETL US PATENT PENDING

Other outstanding systems from Water Maze:

ISO 9001 REGISTERED ETL US PATENT PENDING



dealer.wmaze.com • www.wmaze.com • 800-347-6116 • Fax 800-535-9164 • info@wmaze.com

NOTE: We are constantly improving and updating our products. Consequently, pictures, features and specifications in this brochure may differ slightly from current models. Flow rates and pressure ratings may vary due to variances allowed by manufacturers of our machine components. We attempt to keep our machine performance within $\pm 5\%$ of listed specifications.

INNOVATOR SERIES: INTRODUCING THE LATEST INNOVATION IN WATER TREATMENT SOLUTIONS

The Innovator Series includes a variety of modular products and technologies designed to treat industrial waste water from a wide range of applications. Subject to the waste water characteristics and the application requirements, individual modules can be selected and incorporated into a complete solution.

These new products have been designed with input from various types of end-users. The products incorporate industrial grade components and features that make each component easy to understand, operate, and maintain. The applied water treatment technologies are robust and they are designed to treat applications with more complex waste water characteristics (i.e., suspended solids, emulsified oils & greases, and heavy metals). When correctly applied, the treated water quality should be cleaner and better than most other competing brands.

One of the key features & benefits of the Innovator Series is that water does not stand in the system for extended periods of time. The incorporated robust technologies allows for immediate processing with minimal dwell time. Therefore, water is processed and discharged, or pumped through the recycle module for reuse.



CoAg2-20A: CHEMICAL WATER TREATMENT SYSTEM



CoAg2-20A



A proprietary (patent pending) water treatment system that incorporates chemical coagulation and chemical flocculation technology. This system features industrial grade components and is simple to use and maintain, but is highly effective for treating a broad range of waste streams including suspended solids and emulsified oils. This system will automatically process water and move it downstream so that no standing water is retained within the system after processing is complete. Water is processed on a batch-feed, continual basis.

The equipment specifications include:

- skid mounted steel platform;
- fully enclosed control cabinet with lockable front doors;
- steel components are protected with 2-part zinc epoxy powder coat finish;
- PLC (automated) control system;
- ¾ hp infeed pump with flow switch shut-down system;
- inline chemical injection with mixing chambers;
- chemical containers include low level liquid sensors;
- (2) two 150-gal. polyethylene cone-bottom mixing tanks with air-actuated directional control valves;
- auto-purge valves for each tank

EC2-20A: ELECTRO-COAGULATION (EC+) WATER TREATMENT SYSTEM



EC2-20A



A proprietary (patent pending) water treatment system that incorporates a new generation of Electro-coagulation and chemical flocculation technology. This system features robust industrial grade components and is simple to use and maintain, but is highly effective for treating a broad range of waste streams including suspended solids, emulsified oils, and heavy metals. This system will automatically process water and move it downstream so that no standing water is retained within the system after processing is complete. Water is processed on a batch-feed, continual basis.

The equipment specifications include:

- skid mounted steel platform;
- fully enclosed control cabinet with lockable front doors;
- steel components are protected with 2-part zinc epoxy powder coat finish;
- PLC (automated) control system;
- ¾ hp infeed pump with flow switch shut-down system;
- (2) two Electrolytic cell assemblies with quick-access ring-lock covers to allow for cell cleaning or replacement
- automatic forward cell flush system
- post EC cell inline mixing chambers
- automatic chemical flocculant injection system
- chemical containers include low level liquid sensors
- (2) two 150-gal. polyethylene cone-bottom mixing tanks with air-actuated directional control valves
- auto-purge valves for each tank



IPF2-20D: INDEXING POLISHING FILTER

The IPF solids dewatering unit utilizes inexpensive fabric paper to filter out solid particles. Fabric paper, which is supplied in 5, 20, and 50 micron sizes, is automatically indexed onto a recessed conveyor belt made of high tensile, non-metallic material. As water and solid particles drain through the fabric paper, solids are retained by the fabric paper. As the fabric paper blinds over, the water level will rise, a float will actuate a drive motor and gear system, the conveyor belt will index forward allowing the spent paper to fall into a collection container and new paper to index onto the conveyor belt. The IPF can be applied for pretreatment, post treatment, or as a stand alone treatment system.

IPF2-20D



The equipment specifications include:

- made of industrial grade components;
- carbon steel exterior with a stainless steel interior that protects the wetted surfaces from rusting;
- all carbon steel surfaces are protected with a two part Zinc Epoxy Powder Coat finish;
- the load bearing side (top side) of conveyor belt is fully supported to eliminate belt sagging;
- the drive motor is exterior mounted with a covered housing to protect it from moisture and it has an ETL / UL approved safety shut-off switch;
- the paper roll enclosure includes an electronic sensor to signal "low paper" conditions to an external device (supplied by others)
- includes (4) four adjustable legs to change the elevation of the unit
- includes a collection container for spent paper and sludge
- NOTE: Fabric paper is not included, must be purchased separately.



REC2-20A: RECYCLE WATER / RECIRCULATION MODULE

This product is a water management control center that receives processed water from another source. The unit includes: a pump to transfer pretreated water into a clean-water holding tank (tank supplied by others); a ¾ HP pump with mazzei injector to circulate water in the clean-water holding tank; a transfer pump with pressure tank and manifold piping system to transfer the clean water back to the point of use; an electrical control center; fresh water makeup and excess water discharge system with float controls.



REC2-20A

The equipment specifications include:

- skid-mounted enclosure made of carbon steel with lockable front door;
- all steel components are protected with zinc epoxy powder coat finish;
- the electrical center is housed in a Nema box;
- includes a ¾ HP infeed pump to draw water into a clean water holding tank (tank not included);
- a 1 1/2 HP transfer pump with pressurization system (bladder pressure tank, manifold, pressure switch, etc.);
- 3/4 HP circulation pump with mazzei injector and timer control (PLC);
- a hose connection manifold center;
- fresh water make up and excess water discharge solenoids with float controls
- PLC (automated) control system

Note: the actual consumption rates will vary based on the site specific waste water characteristics

EQUIPMENT

Model	Part Number	System Type (Technology)	Process Flow GPM	Volts/Phase Amps
CoAg2-20A	1.103-487.0	Chemical / Chemical	up to 20	230/1/6
EC2-20A	1.103-486.0	EC / Chemical	up to 20	230/1/44
IPF2-20D	1.103-488.0	Fabric Paper Filter	up to 20	120/3
REC2-20A	1.103-489.0	Recycle Module	up to 20	230/1/22

OPTIONS, UPGRADES & ACCESSORIES

Part #	Description
CoAg2-20A	
8.917-355.0	Stainless steel skid with Zinc epoxy powder coat finish
8.917-354.0	pH Control Kit: includes pH controller, peristaltic pump, inline mixing tubes (Factory Installed)
EC2-20A	
8.917-355.0	Stainless steel skid with Zinc epoxy powder coat finish
8.917-354.0	pH Control Kit: includes pH controller, peristaltic pump, inline mixing tubes (Factory Installed)
8.917-356.0	65-gallon clean water reservoir with fill kit (e.g., float valve, hose connection, bulkhead fitting) for EC cell flushing for discharge apps only

IPF2-20D

8.917-279.0	Water retention container (approx. 40 gallon capacity)
-------------	--

REC2-20A

8.917-652.0	Stainless steel skid with Zinc epoxy powder coat finish
8.917-651.0	UV Ozone generator (Series 400) with mounting bracket

ADD-ONS TO INNOVATOR SERIES

1.103-467.0	PM-1000D BioSystem – bioremediation for dissolved organics
1.103-406.0	AMC-1000, Auto-purge Maintenance Control Retrofit Kit, 120V
TBD	Pre-treatment and clean water holding tanks (see page 14)

PARTS & CONSUMABLES

Part #	Description	List Price
8.725-445.0	CoAg+ Coagulant – 5 gallons	
8.725-446.0	CoAg+ Coagulant – 55 gallons	
8.940-586.0	EC+ Flocculant (Polymer) – 5 gallons	
8.725-508.0	EC+ Flocculant (Polymer) – 55 gallons	
8.750-280.0	Metal R+ Coagulant – 5 gallons	
8.750-281.0	Metal R+ Coagulant – 55 gallons	
8.749-550.0	Liquid Alum (Aluminum Sulfate) – 5 gallons (pH control)	
8.749-549.0	Liquid Alum (Aluminum Sulfate) – 55 gallons (pH control)	
8.749-959.0	Fabric Paper – 50 micron x 500 yards	
8.750-240.0	Fabric Paper – 20 micron x 500 yards	
8.750-239.0	Fabric Paper – 5 micron x 250 yards	
8.917-475.0	Replacement Electrolytic cell (for EC2-20A)	
8.716-143.0	Control float switch for infeed pump (EC2-20A, CoAg2-20A or REC2-20A)	

WASTEWATER TEST KIT: NOW YOU CAN DEMO WATER TREATMENT ON THE SPOT



EC+PLUS Test Kit

Now you can demonstrate to your customers on the spot just how well Water Maze's advanced EC+Plus technology can clean up their wastewater.

This patent-pending technology, that integrates electrocoagulation and polymer injection, is easily demonstrated on site. Once the pH is adjusted the actual demonstration takes less than 1 minute. Once your customer sees how

well EC+Plus technology works with the toughest of waste streams, get ready to hear a "Wow!" Everyone comes away amazed that something so simple can clean up wastewater so well and so quickly.



COAG PLUS Test Kit

Show your customer what the CoAg System can do for their water with the CoAg Plus In-Field Demo Test Kit!



BEFORE AFTER

EQUIPMENT	
Part #	Description
8.749-144.0	EC+Plus Wastewater Test Kit
No Part #	CoAg Bench Scale Test Kit

Note: pH adjusting chemicals are not included

STANDARD SPECIAL (EXPECT EXTENDED DELIVERY TIMES ON COMPACT COAG)

COMPACT COAG: COST-EFFECTIVE CHEMICAL WATER TREATMENT SYSTEM



Compact CoAg

A new addition to the Innovator Series, the Compact Coag employs chemical coagulation and chemical flocculation treatment technologies to enhance and speed up the process of removing suspended solids and emulsified oils from the waste water. Water Maze uses CoAg+, a proprietary coagulant specifically formulated to treat suspended contaminants. After the coagulant has been added, the EC+ polymer is injected to quickly clump the coagulated contaminants together for removal. The chemical process is highly efficient, allowing for adequate mixing and dwell time. Incorporating some of the robust elements of the CoAg2-20A Innovator Series module, but at a reduced price point, this system will normally apply to low flow rate applications (typically less than 8 GPM). However, subject to the application, higher flow rates can be achieved.

- Simple to use and to operate;
- In-line mixing stealth tubes;
- Two peristaltic pumps for chemical injection interfaced with an in-line flow switch);
- Multiple injection ports for customizing the application;
- Steel support frame powder coated with epoxy primer and polyethylene finish coat.

Some typical applications include:

- Treat & discharge system (when combined with an IPF2-20D Indexing Polishing Filter);
- Stationary recycle system (when combined with an IPF2-20D, REC2-20A recycle module, and clean water storage tank);
- Mobile recycle system (when combined with an IPF2-20D, REC2-20A, and clean water storage tank);
- Pretreatment module to an existing tank, clarifier, oil-skimmer, or other system - *even use as a pretreatment to a competitor's system!*



Shown with optional IPF2-20D



EQUIPMENT				
Model	Part Number	System Type (Technology)	Process Flow GPM	Volts/Phase Amps
Compact CoAg	No Part#	Chemical / Chemical	up to 20	120/1/4*
Compact CoAg w/ Infeed Pump	No Part#	Chemical / Chemical	up to 20	120/1/14*

*4 amps w/o infeed pump; 14 amps w/ infeed pump

CLP: TOTALLY AUTOMATED WASH-WATER RECYCLING SYSTEMS



CLP-7034A

The CLP-7034 and 5024 are the standard models of the automated wash-water recycling systems.

They are totally automated using a digital sequencer to monitor and control the filtering, recirculating, filter backwashing and sludge dumping functions. Other CLP features include:

- Extra quantities of media including gravel, sand, anthracite and garnet;

- 185 - 490 sq. ft. of cone-shaped

coalescing plates for optimum separation of oil and solids from wash water;

- Industrial-grade ozone generator;
- Convenient, mess-free method of disposing of sludge from the system;
- Up to 320 lbs. of auto "backwashable," degassed, virgin activated carbon.

EQUIPMENT					
Model	Part Number	Flow GPM	Media Filter	Carbon Filter	Volts/Ph Amps
CLP-7034A	1.103-431.0	1-30	950 lbs.	320 lbs.	230/1/30
CLP-7034B	1.103-432.0	1-30	950 lbs.	320 lbs.	230/3/15
CLP-7034C	1.103-433.0	1-30	950 lbs.	320 lbs.	460/3/9
CLP-5024A	1.103-421.0	1-10	275 lbs.	200 lbs.	230/1/18
CLP-5024B	1.103-422.0	1-10	275 lbs.	200 lbs.	230/3/12
CLP-5024C	1.103-423.0	1-10	275 lbs.	200 lbs.	460/3/8

Note: Compressed air required for these models (3 cfm at 60-100psi)

OPTIONS AND UPGRADES	
Part #	Description
8.903-686.0	Upgrade Platform to Stainless Steel, CLP-7034
8.903-684.0	Upgrade Platform to Stainless Steel, CLP-5024

Notes: See page 10 for "Standard Specials" versions of CLP/Bioremediation Systems.

CLP Systems listed above no longer come standard with a sump pump. See page 20 for pump recommendations.

CL-304: ECONOMICAL RECYCLE SYSTEM

For very low-volume applications, the CL-304 offers a compact and affordable recycling system engineered to fit on a single platform.

Among the features are:

- Flow rate is 1-5 gallons;
- Chlorination is used for sanitizing the waste stream;
- Oil-water separation occurs in a 300-gallon tank with a coalescing pack of 94 sq ft of area;
- The holding tank is 40 gallons and the dimensions are 72" L x 72" W x 90" H.



CL-304A



RECYCLE SYSTEMS					
Model	Part Number	Flow GPM	Recycle System	Ozone Generator	Volts/Phase Amps
CL-304A	1.103-409.0	1-5 GPM	Yes	Chlorinator	230/1/15
CL-304A - Biosystem			<i>Available through Specials Department</i>		
Specs: same as above without chlorinator, but with microbial and nutrient injection and aeration system					

OPTIONS AND UPGRADES	
Part #	Description
8.903-683.0	Upgrade Platform to Stainless Steel, CL-304

Note: CL Systems listed above no longer come standard with a sump pump. See page 20 for pump recommendations.



CLARIFIERS: SOLIDS / OIL & WATER / SEPARATION - DISCHARGE SYSTEMS

Water Maze CL and CLT clarifier systems are modular components that can be applied as pretreatment, post-treatment, or as a stand alone treatment system. All units utilize cross-linked polyethylene cone-bottom tanks with steep slopes (up to 55 degrees) for maximum solids separation. Each tank has a full open top with removable lid and includes heavy duty metal stand with cradle. Each model provides features and benefits to match your application requirements.

The **CLT-300** model includes:

A 300-gallon tank with lid; 3" inlet and 1 1/2" outlet bulkhead fittings; and manual purge valve at the bottom

The **CLT-600** model includes:

A 600-gallon tank with lid; manual purge valve at the bottom; 3" inlet and outlet bulkhead fittings; internal downward piping arrangement; and air diffuser stone mounted inside the tank.

The **CL-30A** model includes:

A 600-gallon tank with lid; 1 1/2" inlet and outlet bulkhead fittings; a top divider cone and 2 lower coalescing cones; oil skimmer cone with outlet piping; 15-gallon oil decanter reservoir; 165-gallon poly tank with a 1/2 HP sump pump mounted inside; manual purge valve at the bottom; and sludge tub / dewatering container.

The **CL-600D** model includes:

A 600-gallon tank with lid; 1 1/2" inlet and outlet bulkhead fittings; a top divider cone and 9 lower coalescing cones; oil skimmer cone with outlet piping; 15-gallon oil decanter reservoir; manual purge valve at the bottom; sludge tub / dewatering container, series 400 UV ozone generator, mazzei injector, 1/2 HP circulation pump with timer control, 120 volt electrical control panel with mounting bracket.



CL-600D



DISCHARGE OR PRETREATMENT SYSTEMS					
Model	Part Number	Flow GPM	Recycle System	Ozone Generator	Volts/Phase Amps
CL-600D	1.103-410.0	1-30 GPM	No	24g/day	120V/1/20
CL-30A	1.103-408.0	1-30 GPM	No	None	230V/1/4.6
CLT-300	1.103-434.0	1-10 GPM	No	None	N/A
CLT-600	1.103-435.0	1-30 GPM	No	None	N/A
CL-30A	No Part#	300-gallon version of model CL-30A w/o the 165-gal tank and pump			

Available through Specials Department - Expect extended delivery times

OPTIONS AND UPGRADES	
Part #	Description
8.903-695.0	Auto Purge - Automatically removes solids from CL-600 ONLY cone-bottom tank (not applicable to CL-30 or CLT models; compressed air required, 3 cfm at 60-100psi)
8.903-651.0	ORP/pH Controller, Model 250, 2 Pumps, Factory Upgrade CL-600D only
No Part#	Auto-Water Discharge; automatically switches between recycle and discharge modes for CL-600D, CL-30A <i>Purchased through Specials Department - Expect extended delivery times</i>

ACCESSORIES	
Part #	Description
1.103-406.0	AMC-1000, Auto Purge Infield Retrofit Kit, 120V
8.716-989.0	pH-only Controller with probes, stand alone
8.715-379.0	VSP 20 metering pump, 120V

ALPHA: TOP-OF-THE LINE, INDUSTRIAL OIL AND WATER SEPARATOR

The Alpha is a highly effective above-ground oil-water separator, designed to discharge wash water to the sanitary sewer at rates of up to 30 GPM.

The genius of the Alpha is the proprietary "maze" design of up to 1000 sq. ft. of inclined coalescing plates which draw oils from wash water. The plates are strapped together in packs and are easily lifted out for cleaning.

Other features include:

- Up to 250-gallon stainless steel tank and aluminum lid for rust-free operation;
- Ultra-violet ozone generator uses special mixing procedure to ensure up to 99% contact of bacteria-killing ozone in wash water;
- Stainless steel baffles direct water flow for optimum treatment;
- Automatic oil removal and disposal;
- Specially designed sheen filter polishes the water before discharge;
- Water-resistant control box for automatic operation of pumps.



Alpha-3100D



EQUIPMENT					
Model	Part Number	Flow GPM	Coalescing Area	Tank Size	Volts/Phase Amps
ALPHA-3100D	1.103-402.0	1-30	1000 sq ft	250 gal	120V/1/10
ALPHA-1500D	1.103-401.0	1-15	500 sq ft	125 gal	120V/1/10

OPTIONS AND UPGRADES	
Part #	Description
8.903-694.0	Auto-Water Discharge; automatically switches between recycle and discharge modes - *See note
8.903-647.0	ORP/pH Digital Controller, Model 250, 2 Pumps

* Auto-water discharge is also available through out Specials Department for other applications (i.e., CL600D, CL30A, etc.)

Note: Alpha Oil-Water Separators listed above no longer come standard with a sump pump. See page 20 for pump recommendations.



FILTER PAC III (OPTION)

The Filter Pac III module can be applied for polishing waste streams in treat and discharge, as well as recycle applications.

Designed for flow rates of up to 30 GPM, the Pac III features carbon, cartridges and media filters for recycle quality wash water.



Filter Pac III

F I L T E R P A C I I I					
Model	Part Number	Media Filter	Carbon Filter	Cartridge Filter	Volts/ Phase Amps
PAC III	8.903-715.0	330 lbs.	300 lbs.	500 sq. ft.	230/1/10.5
PAC III	8.903-716.0	330 lbs.	300 lbs.	500 sq. ft.	230-460/3/5.6-2.8

pH PERMISSIVE SYSTEM: AUTOMATICALLY ADJUSTS WATER pH



A pH Permissive System automatically monitors and adjusts the pH in a waste stream enhancing the effectiveness of wastewater treatment systems, including an evaporator.

The unit continuously circulates the wastewater monitoring and injecting pH adjusting agents using two chemical pumps. It also has an alarm for alerting the operator if the pH level is not reached in a set time eliminating the maintenance headaches sometimes associated with manually operated recycling systems.

E Q U I P M E N T	
Part #	Description
1.103-458.0	PH-3020D Digital pH Permissive System (120V, 9 amps)
8.903-682.0	Optional Auto Fill (SS sump pump, fittings and floats)
8.903-681.0	Optional Holding Tank, 300 gal. (valves and hose)

MAINTENANCE CONTROLS: RETROFIT KITS FOR AUTOMATING SYSTEMS

The AMC-1000 is an in-field retrofit kit that automates the discharge function on Water Maze systems to dispense wastewater and sludge from a system for disposal.

The AMC (Automatic Maintenance Control) kit is designed to automate the purging of the build up of solids in a cone-bottom tank of a water treatment system, such as a CLT-800, CLT-600 or CL-30. The AMC operates on stand-alone 120V electrical.

■ **AMC-1000 (1.103-406.0):** This air-operated kit comes mounted in a NEMA box. A microtimer causes the air-activated purge valve to open discharging the sludge from the tank. Air supply (3 CFM @ 80-100 PSI) must be supplied by the customer.

A C C E S S O R I E S	
Part #	Description
1.103-406.0	AMC-1000, Maintenance Control Retrofit Kit, 120V

OZONE GENERATORS: FOR ADDED WATER CLARITY

This self-contained ozone generator is ideal as a stand-alone system for ridding wastewater of odor and bacteria.

Ozone works up to 1000 times faster than chlorine, and other sanitizers, in killing bacteria without creating harmful byproducts. It also acts as a deodorizer.

Model 30-7501 includes an enclosed cabinet painted with a powder coat finish.

A unique mixing procedure ensures 99% contact by the bacteria-killing ozone with the wash water—a procedure far more effective than bubbling ozone into a tank.

Other features include: 3/4 hp circulation pump; 24-hour timer control; and 4 ultraviolet lamps which create 24 grams of ozone per day.

Ozone generators are also available for use in existing systems:

■ **Ultraviolet Systems:** Economical, high-efficiency generators with one, two or four lamps producing up to 24 grams of ozone per day.

*Other models with higher ozone output are available through our specials dept.



A C C E S S O R I E S				
Model	Part #	Description	Flow Rate	Volts/Ph/Amps
30-7501	1.103-457.0	Ozone Generator	1-30 GPM	120/1/8



CLB: MODULAR BIO-SYSTEM FOR RECYCLING OR DISCHARGING TO SANITARY SEWER

TREATS GOLF, COMMERCIAL AND INDUSTRIAL WASTEWATER

For applications outside golf and turf markets, our wastewater analysis #8.719-148.0 is required prior to ordering. See page 15 for details.

The Water Maze BioSystem or CLB series employs the latest bio-technology for treating and recycling commercial and industrial wastewater

including golf and turf applications where there's a high organic content in the wash water.

The CLB's unique design features modular components so the system is customized to match each customer's application requirements as well as to keep the equipment cost and performance to only what is truly needed. Moreover, the systems are automated for ease of maintenance.

Water Maze's advanced bio-technology features super-efficient aerobic microbial digesting, enhanced water circulation, injection of cultured microbes at concentrated levels and the introduction of a special microbial nutrients blend.

Unlike filtration systems, which create a sometimes hazardous sludge, the BioSystem naturally converts organic contaminants—such as oil, grease, etc. that are common to wash water—into harmless water and carbon dioxide.

Other features include: high-density, cross-linked, polyethylene tanks; water-resistant electronics control panel; and 2,087 sq. ft. of bio-media, with highly efficient injection of dissolved oxygen to enhance aerobic microbial digestion.

The customized, environmentally friendly BioStax 1800 consists of a special blend of non-pathogenic and non-toxic bacteria that provide an easy and effective way to control odor and dramatically reduce oil, grease and other hydrocarbons typically found in wastewater. There are no hazardous byproducts.

The biology is further enhanced by Water Maze's BioNutrient, that is automatically injected into the water stream of the BioSystem.



Grass dumpster CLT-300 pre-treatment Recycled water holding tank CLB-603A, main bio-digestion unit CLT-600 polishing tank for enhanced bio-digestion



CLB-600, main bio-digestion unit for discharge system



CLB-30, auxiliary discharge tank for additional process capacity

EQUIPMENT

Model	Part Number	Type of System	Bio-Media Surface	Tank Capacity	Volts/Phase Amps
CLB-603A	1.103-417.0	Recycle	2,087 sq ft	600 gal	230/1/20
CLB-600D	1.103-416.0	Discharge	2,087 sq ft	600 gal	120/1/9
CLB-30D	1.103-414.0	Auxiliary	2,087 sq ft	600 gal	120/1/1
CLT-600	1.103-435.0	Auxiliary	None	600 gal	N / A
CLT-300	1.103-434.0	Auxiliary	None	300 gal	N / A

OPTIONS, UPGRADES & ACCESSORIES

Part #	Description
WATERSTAX GOLF COURSE SYSTEMS	
8.903-602.0	Grass dumpster with SS mesh-lined dewatering screen
8.903-783.0	HydroScreen, stainless steel, grass slide assembly with hose Grass screen, stainless steel, for HydroScreen
8.903-784.0	Mounting bracket for attaching HydroScreen to CLT-300
ADD-ONS TO ALL OR DESIGNATED BIO-SYSTEMS	
8.903-780.0	Pressure pump, 2 HP, for upsizing 3/4 HP pump (CLB-603)
8.903-785.0	Oil separation assembly, automatic, with collection tank, 26-gallon
8.906-478.0	Sludge tub with lid
8.903-781.0	pH Controller (CLB-603A)
8.903-787.0	pH Controller (CLB-600D)
ACCESSORIES FOR CLB-30, CLT-300/600	
8.903-782.0	Auto-purge valve; valve only
1.103-406.0	AMC-1000, Maintenance Control Retrofit Kit, 120V
8.715-367.0	Sump pump (for pumping water from collection pit)

PARTS

Part #	Description
8.719-172.0	165-gallon flat bottom recycled water holding tank
8.712-417.0	Diffuser stone, fine pore, 6-1/2"
8.706-291.0	Fitting, compression 1/2" mpt x 3/8", 316 stainless steel
8.706-027.0	Coupler, 1/2", 316 stainless steel
8.707-435.0	Biomedica Bag
8.706-676.0	Eofill (Biomedica) 8 lbs / bag recommended

See next page for bio-media pricing.

BIO-MEDIA: ALL-NATURAL SOLUTIONS FOR COLLECTION PITS & GREASE TRAPS



Water Maze provides a broad selection of bio-media used in bio-treatment systems, collection pits and even kitchen grease traps.

These all-natural products are made up of a special blend of non-pathogenic, non-toxic bacteria

designed for use in applications where pressure washers are typically found.

The products include:

- **BioPuck HC:** An award-winning, microbial blend designed for naturally removing oil, grease and other hydrocarbons from a was-water collection pit; apply 1-2 tablets per month; available in package of four pucks; 4-pack package comes with containment nets and BioNutrient.
- **BioPuck GT:** Bacterial blend formulated for naturally eliminating fats, cooking oils and greases found in a kitchen or food processing facility.

PARTS AND CONSUMABLES	
Part #	Description
8.718-913.0	BioPuck HC, 4-pack with BioNutrient and four pit socks
8.749-853.0	BioPuck HC, box of 20 pucks
8.718-914.0	BioPuck GT, 4-pack with four pit socks
8.718-918.0	BioStax 1800, liquid, 2 containers A&B (concentrate makes 55 gallons)*
8.718-917.0	BioStax 100 Hawaiian Blend, liquid, 8 oz. vial
8.718-919.0	BioStax 1800, Two 8 oz vials (A & B) makes 5 gallons
8.718-916.0	BioNutrient, powder, 8 oz vial

* Non-stock item



■ **BioStax 1800:** A two-part proprietary liquid blend of a non-toxic, non-pathogenic bacterial concentrate that is designed for slow release of microbes into the CLB BioSystem (see page 6). Also for use with the Pit Management System (see page 7). Comes in a kit made up of two 8-ounce bottles (designated "A" and "B") for mixing with water to make 5 gallons. Helps to control odor and the breakdown of hydrocarbons, greases and oils. Replaces BioStax 900. Certified by the ATCC as gram positive, class 1, pathogen-free organisms.

■ **BioStax 100 Hawaiian Blend:** Designed for use in systems installed in Hawaii.

■ **BioNutrient:** The Water Maze BioNutrient is a powder concentrate that mixes with water and enhances the effectiveness of the bioremediation process.

STANDARD SPECIALS (EXPECT EXTENDED DELIVERY TIMES)

PM-1000: AUTOMATIC SYSTEM FOR BIOREMEDIATION PIT MANAGEMENT

If you face a smelly mess every Monday morning from a forgotten wash-water collection pit, Water Maze has a solution for you in the Pit Management System.

The PM-1000D provides a fully automated, environmentally friendly and low-cost



Timers are located in a water-resistant control panel and automatically provide aeration and microbial injection.



Works Best With BioStax 1800
#8.718-919.0
Above

way to manage standing wash water found in collection pits, tanks or sump drains.

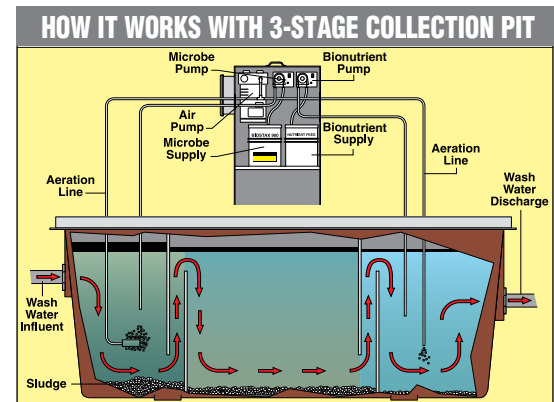
It is designed to be integrated into most wash-water treatment systems utilizing aeration and automatic injection of a highly effective microbial agent (BioStax 1800) for eliminating oils, greases and other hydrocarbons and organics typically found in collection pits or sump drains.

BioStax 1800 has proven to be very effective in controlling odor and converting oils, greases, and hydrocarbons into harmless carbon dioxide and water.

The aeration further enhances the effectiveness of the microbes and provides odor control.

Dimensions: 21"L x 30"W x 46"H
Ship Weight: 185 lbs.
Not ETL certified

EQUIPMENT		
Part #	Description	Volts/ Ph/Amps
1.103-467.0	PM-1000D Pit Management System (Includes Air Compressor with Air Stones)	120/1/6



PM-1000 FEATURES AND BENEFITS:

- Easy in-field installation
- Fits most brands of water treatment systems
- Effectively reduces odor
- Biology consumes oils, grease, hydrocarbons, etc.
- Steel cabinet protected by epoxy powder coat finish

STANDARD SPECIAL (EXPECT EXTENDED DELIVERY TIMES)

TPS-600: NEW TAERATION PUMPING SYSTEM

This new micro bubble, oxygen delivery system by Water Maze uses Taeration technology which is the fastest and most economical way to aerate a liquid. Taeration provides complete mixing and de-stratification of a vessel or body of liquid, using only a centrifugal pump, and without a mechanical, artificial or venturi air supply. This system simply requires an inlet and an outlet hook up to the tank.



EQUIPMENT	
Part #	Description
No Part#	TPS-600 Taeration Pumping System, 1 phase
No Part#	TPS-600 Taeration Pumping System, 3 phase

Other models available depending on your application needs

Features include:

- 600+ obs of oxygen per day;
- Super efficient micro bubble creation;
- Heavy-duty industrial components;
- TEFC motor;
- Patented “Taeration” nozzle system;
- Automatic recirculation system;
- Available 1 or 3 phase electrical.

COLLECTION PITS: BELOW-GROUND PRE-TREATMENT OF WASTEWATER

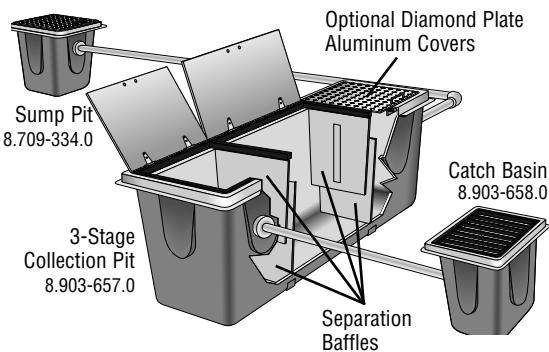
Reinforced, pre-fabricated fiberglass pits are an economical in-ground, oil-water separator as well as provide ideal pre-treatment of wash-water.

The 3-stage collection pit is designed with baffles and for Water Maze’s proprietary oil-coalescing plates to be inserted into the center chamber for enhanced separation.

This fiberglass separator is significantly easier and less expensive to ship and install than shipping or constructing on site collection pits made of concrete. The reinforced fiberglass sidewalls prevent bowing and underground movement.

The fiberglass collection pit works best when combined with a catch basin and sump pit, which are both made of the same chemical-resistant, reinforced fiberglass.

The wash water flows into the catch basin, where solids drop to the bottom. The runoff then flows into the collection pit. As it passes through the baffles, oil and other debris are separated from the water. In some instances, this is all that is needed to meet discharge limits for the sewer. If needed, a sump pit may be used to transfer wastewater into a Water Maze water treatment system.



ACCESSORIES	
Part #	Description
8.903-657.0	Collection Pit, Fiberglass, In-Ground Oil-Water Separator, 3' x 9' x 5' (Inside Dimensions); 60 GPM
8.903-674.0	Cover for Collection Pit (#8.903-657.0), Hinged Aluminum Diamond Tread Plate w/ Steel Tube Frame, 3' x 9'
8.903-673.0	Coalescing Grid Packs, 58 Plates, 1,700 sq. ft. Surface Area
8.903-658.0	Catch Basin, Fiberglass, In-Ground, 3' x 3' x 4.5' (Inside Dimensions)
8.903-678.0	Cover for Catch Basin (#8.903-658.0), Aluminum Diamond Tread Plate, 3' x 3'
8.903-677.0	Grating for Catch Basin (#8.903-658.0), Hot Rolled Steel, 1/2" x 2" Flatbar, 1.5' x 3' (includes 2 grates)
8.709-334.0	Sump Pit, Fiberglass, In-Ground, 2' x 2' x 3' (Inside Dimensions)
8.903-675.0	Cover for Sump Pit (#8.709-334.0), Aluminum Diamond Tread Plate w/ Steel Tube Frame, 2' x 2'
8.903-676.0	Grating for Sump Pit (#8.709-334.0), Hot Rolled Steel, 1/2" x 2" Flatbar, 2' x 2'

PARTS	
Part #	Description
8.712-023.0	Wood Brace Kit (bracing to reinforce fiberglass while pouring concrete)
8.706-480.0	3-Inch Bulkhead Fitting, Threaded (must specify quantity)

STANDARD SPECIALS (EXPECT EXTENDED DELIVERY TIMES)

CLPB WITH BIO: AUTOMATED RECYCLING SYSTEMS WITH BIOREMEDIATION



CLPB-7034A

The CLPB combines CLP filtration technology with our advanced bio-technology used in the CLB systems. Modifications made to the CLP include: removing the coalescing cones and adding bio-media, an Air Stick, an air diffuser stone and an inverted lower cone; removing the ORP/ph controller and adding a pH-only controller; the addition of microbes and nutrient injection;

ozone is injected into tank #2 only (clean water tank); a bleeder line is installed so that water constantly flows from tank #1 to the pit system.



**This equipment is not supplied with ETL/UL certification.*

EQUIPMENT				
Model	Flow Rate GPM	Media Filter	Carbon Filter	Volts/ Phase Amps
CLPB-7034A	1-30	950 lbs.	320 lbs.	230/1/30
CLPB-7034B	1-30	950 lbs.	320 lbs.	230/3/15
CLPB-7034C	1-30	950 lbs.	320 lbs.	460/3/9
CLPB-5024A	1-10	275 lbs.	200 lbs.	230/1/18
CLPB-5024B	1-10	275 lbs.	200 lbs.	230/3/12
CLPB-5024C	1-10	275 lbs.	200 lbs.	460/3/8

Note: Compressed air required for these models (4 cfm at 60-100psi)

CLPB Systems listed above no longer come standard with a sump pump. See page 20 for pump recommendations.

STAINLESS HBG: EVAPORATOR WITH A STAINLESS STEEL EXTERIOR



The HBG wastewater evaporator, which uses the conventional hot-plate technology, also is available with a stainless steel exterior (lower heat chamber and upper tank wrap) as a standard special.

The HBG-30D-SS features Water Maze's unique high-efficiency combustion chamber and is natural gas or LP-heated. Evaporatin rate is up to 30 gallons per hour.

The unit is made of heavy-duty steel inside and is insulated and double lined for energy efficiency and safety.

EQUIPMENT				
Model	Flow Rate	BTU	Volts/Phase/Amps	Tank
HBG-30D-SS	1-30 GPH	390,000	120/1/3	100 gal

See page 12 for standard HBG options and accessories

OIL-HEATED HBG: EVAPORATOR THAT OPERATES ON DIESEL OR FUEL OIL



**This equipment is not supplied with ETL/UL certification.*

The HBO-30D wastewater evaporator, available only as a standard special, is heated by diesel or fuel oil.

As with other HBG models, it features our unique high-efficiency combustion chamber and is made of heavy-duty steel inside and is insulated and double lined for energy efficiency and safety.

The evaporation rate is up to 30 gallons per hour.

EQUIPMENT				
Model	Flow Rate	BTU	Volts/Phase/Amps	Tank
HBO-30D	1-30 GPH	390,000	120/1/3	100 gal

Note: Fuel tank not supplied

See page 12 for standard HBG options and accessories

WASTEWATER EVAPORATION: HOW PATENTED TECHNOLOGY ENHANCES ENERGY EFFICIENCY

For years evaporation has been an economical alternative to the high cost—as much as \$3 per gallon in some areas—of hauling wastewater.

Because water typically makes up more than 90% of most waste streams, getting rid of the water through evaporation leaves only a small residue of waste to be disposed of properly at a much reduced cost and much reduced risk of cradle-to-grave liability.

Most evaporation equipment uses immersion tube technology to evaporate wastewater. In 1994 Water Maze introduced a patented, super-energy efficient system using submerged combustion in which heat is forced through a submerged tube and released directly into the water for 100% heat exchanger efficiency and dramatic operational and energy cost savings.

U.S. PATENTS #5,381,742 AND #D357,056 AND CANADIAN PATENT #75,858 • OTHER PATENTS PENDING

WB: SUPER ENERGY-EFFICIENT WASTEWATER EVAPORATOR

The WB series is the first to use the extra-high efficient submerged combustion technology.

There are two models for handling waste streams at 60 and 120 gallons per hour.

Featuring top-of-the-line immersion tube jet burner components, with a solid-state flame control monitor, the WB models are capable of creating temperatures of up to 2000°F, releasing hot flue gases directly into the water.

Other features include:

- Heat-resistant, heavy-duty stainless steel sparger tube with unique air distribution system;
- RF capacitance liquid level assembly for greater safety and enhanced operation;
- Nema 4 electrical box with operational controls as well as troubleshooting indicator lights;
- Auto purge, auto start/stop and auto fill come standard;
- Soft-start ignition system and fast-closing UL, CSA and FM approved gas valve for smooth operation;
- Stainless steel steam de-mister box;
- Many safety features, including a UV scanner which shuts down the unit when a flame does not appear;
- Foam suppression system and easy-to-access sludge disposal valve.



EQUIPMENT				
Model	Part #	Flow Rate	BTU	Volts/Phase/Amps
WB-120A	1.103-473.0	1-120 GPH	1,142,000	230/1/30
WB-50A	1.103-474.0	1-60 GPH	571,000	230/1/20

Note: Compressed air required (4 cfm at 60-100psi)

OPTIONS AND ACCESSORIES	
Part #	Description

STAINLESS STEEL UPGRADES FROM 316L

- | | |
|-------------|---|
| 8.903-729.0 | Conversion of WB-120 Tank and Tube to AL-6XN* |
| 8.903-725.0 | Conversion of WB-50 Tank and Tube to AL-6XN* |

CONVERSION KITS AND ACCESSORIES

- | | |
|-------------|---|
| 8.906-066.0 | Factory Conversion of WB-50/120 from Natural Gas to Propane |
| 8.903-762.0 | Foam Detection System |
| 8.903-766.0 | Wastewater Flame Injection System, WB-50 |
| 8.903-767.0 | Wastewater Flame Injection System, WB-120 |

PARTS	
Part #	Description
8.717-742.0	10" Flue Pipe Rain Shield, WB-50
8.717-743.0	12" Flue Pipe Rain Shield, WB-120

* Expect extended lead times

SUBMERGED COMBUSTION TECHNOLOGY

HOW IT WORKS: NEW TECHNOLOGY DELIVERS 100% HEAT EXCHANGER EFFICIENCY WITH RELEASE OF HEAT DIRECTLY INTO THE WASTEWATER

The WB evaporator uses submerged combustion to deliver 100% heat exchanger efficiency sending the heat directly into the water, not up a vent stack, creating significant operational and energy cost savings.

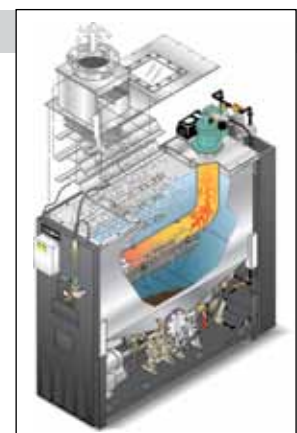
Also, heat is not lost trying to get through the "insulation" of residual solids baked onto a heat exchanger.

The 100% heat exchanger efficiency has been verified by an independent testing laboratory.

Here's how it works:

A flame generated by a turbo, natural gas burner—fanned by a regenerative blower—rushes down a submerged sparger tube inside a cone-bottom tank filled with water. The heat is released directly into the water through openings in the tube. The surrounding water is immediately flash boiled.

The steam rumbles to the surface, heating more of the water as it rises, and is vented through an exhaust flue. Concentrated waste is collected in the tank bottom and automatically removed using the auto purge feature.





HBG & HBE: HIGH-EFFICIENCY WASTEWATER EVAPORATOR USING HOT-PLATE TECHNOLOGY

Water Maze offers several models of evaporators that use the conventional hot-plate technology with a unique high-efficiency combustion chamber.

There are three models of the HBG / HBE capable of evaporating wastewater at 8, 15 and 30 gallons per hour.

The natural gas-heated HBG systems have two models. The all-electric HBE, featuring eight 2600-watt coil-type heater, has one model with either 230V 3ph or 460V 3ph configurations.

The combustion box in the HBG models is made of advanced heat reflective material and features a unique energy-efficient design for reflecting the heat directly onto the floor of the evaporation tank for energy cost savings.

The unit is made of heavy-duty steel, insulated and double lined for energy efficiency and safety. Other features include:

- Heavy-duty tank made of carbon steel with optional alloy upgrades to 316L or AL-6XN stainless steel;
- Non-fouling, stainless steel, liquid level assembly prevents damage to the system with a redundant third float for protection against overflowing;
- Nema 4 electrical box with operational controls as well as troubleshooting indicator lights;
- High-efficiency burner shoots a flame, fueled by natural gas or propane, into the combustion chamber for unusually high energy efficiency;
- Three-inch, recessed drain port for easy sludge removal.



PARTS AND CONSUMABLES		
Part #	Description	List Price
8.717-742.0	10" Flue Pipe Rain Shield, HBG-30	\$ 332
8.717-740.0	6" Flue Pipe Rain Shield, HBG-15	\$ 164
8.719-140.0	5600 Defoamer, 55 Gallons	\$1,816
8.719-139.0	5600 Defoamer, 5 Gallons	\$ 188
8.719-138.0	5600 Defoamer, 1 Gallons	\$ 41
8.749-779.0	Defoamer A-32, 5 Gallons (for use with metal working coolants)	\$ 377
8.749-782.0	No Rust Corrosion Inhibitor, 5 Gallons (concentrate)	\$ 459

EQUIPMENT					
Model	Part #	Flow Rate	BTU	Volts/Ph/Amps	Tank
HBG-30D	1.103-449.0	1-30 GPH	390,000	120 / 1 / 3	100 gal
HBG-15D	1.103-448.0	1-15 GPH	200,000	120 / 1 / 3	70 gal

Note: HBE with options will be available through the specials department. Expect extended lead times.

OPTIONS AND ACCESSORIES	
Part #	Description

STAINLESS STEEL TANK UPGRADES FROM CARBON STEEL

8.903-749.0	Conversion of HBG-30 Tank to 316L Stainless Steel
8.903-750.0	Conversion of HBG-30 Tank to AL-6XN*
8.903-746.0	Conversion of HBG-15 Tank to 316L Stainless Steel
8.903-747.0	Conversion of HBG-15 Tank to AL-6XN*

AUTO FILL FACTORY CONVERSION KIT

8.903-740.0	Air Diaphragm Fill Pump & Level Controls for Auto Fill; HBG-30, HBG-15 (compressed air required, 3 cfm at 60-100psi)
8.903-739.0	Air Diaphragm Fill Pump & Level Controls for Auto Fill, HBE-10B/C (compressed air required, 3 cfm at 60-100psi)
8.903-753.0	Electric Centrifugal Fill Pump & Level Controls for Auto Fill, HBG-15/30

CONVERSION KITS AND ACCESSORIES

8.906-076.0	Factory Conversion of HBG-15 from Natural Gas to Propane
8.906-077.0	Factory Conversion of HBG-30 from Natural Gas to Propane

MOTORIZED BELT OIL SKIMMER

8.903-741.0	Motorized Belt Oil Skimmer, 316L Stainless Steel
-------------	--

CHEMICAL ADDITION SYSTEM

8.906-074.0	Chemical Injector, Defoamer, Air-Injected Use with Conversion Kit Above #8.903-740.0 and 8.903-739.0
8.906-073.0	Chemical Injector, Anti-Foam, Electric-Powered Use with Conversion Kit Above #8.903-753.0 and 8.903-756.0

* Expect extended lead times

EVAPORATOR BELT: ECONOMICAL ALTERNATIVE FOR LOW-VOLUME EVAPORATION



The Evaporator Belt is ideal for evaporating very low volumes of wastewater.

The electric-powered belt wraps around a standard 55-gallon steel drum and slowly heats non-flammable liquids to temperatures of 70° to 250°F.

The heavy-duty aluminized steel belt includes thermostatic control and weighs only 14 lbs.

EQUIPMENT	
Part #	Description

8.707-034.0	Wrap-It-Heat Water Reduction Drum Heater Evaporation Rate of 1.4 GPH (230V, 1ph, 12.5 amps)
-------------	--

Note: Drum not included

ORP/pH CONTROLLER



Maintaining the proper ORP/pH levels is vital in wash-water treatment. Digital controllers are available to monitor and automatically inject chemicals. The controller includes ORP/pH pumps, monitoring probes and necessary electrical and plumbing connections.

OPTIONS AND ACCESSORIES

Part #	Description
8.903-647.0	ORP/pH Digital Read-Out Controller, Model 250, with 2 Pumps (VSP 20); for Alpha, Factory Installed
8.903-651.0	ORP/pH Digital Read-Out Controller, Model 250, with 2 Pumps (VSP 20); for CL-600D; Factory Installed

PARTS

Part #	Description
8.716-989.0	pH-only Controller, with probe; Field Installed Only Requires VSP20 Metering Pump, 120V (#8.715-379.0)
8.715-378.0	VSP20 Metering Pump, 24VAC
8.715-379.0	VSP20 Metering Pump, 120V
8.716-905.0	Replacement pH Sensor
8.716-906.0	Replacement ORP Sensor

STORAGE TANKS & SPECIALTY KITS

Polyethylene storage tanks are ideal for expanding the capacity of a water filtration system or simply to serve as a “cushion” in handling high volumes of wash-water. All are UV- and corrosion-resistant.



8.719-173.0

PARTS

Part #	Description
STORAGE TANKS	
8.719-173.0	Storage Tank, Polyethylene, 310 gal., Cone Bottom with Stand
8.719-172.0	Intermediate Storage Tank, Polyethylene, 165 gal., Flat Bottom
8.725-510.0	150 Gal. Cone Bottom Tank
TBD	150 Gal. Stand
TEST KITS	
8.712-138.0	Ozone Flowmeter
8.720-009.0	Chlorine Test Strips
8.720-010.0	pH Test Strips

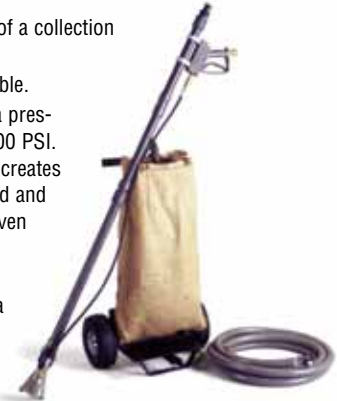
PIT CLEANER: FOR SLUDGE REMOVAL

Cleaning sludge from the bottom of a collection pit is neither easy nor fun.

But the Pit Cleaner makes it bearable.

An extended wand is attached to a pressure washer, with a minimum of 1000 PSI. The pressure is channeled so that it creates a vacuum, capable of suctioning mud and sludge from the bottom of a pit or even a pond.

The sludge is deposited into a porous collection bag, mounted on a hand truck, where the water drains out and the sludge is allowed to dry for eventual disposal.



ACCESSORIES

Part #	Description
8.903-600.0	Pit Cleaner (includes wand and hose only)
8.709-206.0	Sludge Cart Only (includes 5 bags)
8.719-191.0	Sludge Bag (biodegradable, cotton fiber), Qty 1
8.903-601.0	Shallow Pit Cleaner (up to 2 feet deep), Qty 1

WATER BLASTER: FOR PRE-WASHING

When heavy equipment and vehicles are laden with loads of dirt and mud, water volume is more effective than high pressure for a thorough cleaning.

The Water Blaster delivers up to 25 GPM of water volume—nearly 6 times more than most pressure washers—along with 500 PSI of pressure to knock off heavy dirt with ease.

Water Blasters come standard with:

- Two electrical configurations of an industrial-duty 10 HP motor with on-off motor control for convenience in washing away from the unit;
- Rugged self-priming, high-pressure diaphragm pump mounted on vibration isolators;
- Liquid level switches to ensure flow of water; and
- 100 ft. of 3/4-inch, abrasive-resistant hose with a variable fan wand.



Water Blaster: High volume (25 GPM) combined with moderate pressure (500 PSI)

EQUIPMENT

Part #	GPM	PSI	HP	Volts/Ph/Amps
1.103-484.0	25	500	10	230/3/30
1.103-472.0	25	500	10	460/3/15

UPGRADES & PARTS

Part #	Description
1.103-435.0	CLT-600, 600-Gallon Cone-Bottom Tank and Stand
1.103-434.0	CLT-300, 300-Gallon Cone-Bottom Tank and Stand
8.719-173.0	Vertical Poly, 310-Gallon Tank with Stand
8.711-863.0	Manually Operated Hose Reel only

WASTE STREAM ANALYSIS



The key to any water treatment system is an analysis of the waste stream to ensure the equipment is properly suited for the application and, in the case of evaporators, to determine what air quality permits are required, if any.

Water Maze offers several wastewater test kits (below) as well as a variety of advanced wastewater analyses (right).

WASTEWATER TEST KITS

Part #	Description
8.719-146.0	Evaporator Waste Stream Sampling Kit (1 kit only)
8.719-147.0	Bioremediation Waste Stream Sampling Kit (1 kit only)
8.749-144.0	EC+Plus Wastewater Test Kit

WASTEWATER ANALYSES

Profile #	Description
8.750-241.0	Metal Analysis (includes Ag, As, Ba, Cd, Cr, Pb, Se Hg, Cu, Zn, Ni) For each additional metal not listed above add...
8.750-242.0	Base Analysis for Evaporators (includes analysis of pH dissolved and suspended solids, Total Oils & Greases, NP [Non-Polar] Oils & Greases, Anions [Cl, NO ₃ , o-PO ₄ , SO ₄], Flashpoint, Viscosity, Cations [B, Ca, Fe, K, Mg, Na])
8.719-148.0	Base Analysis for Bioremediation (includes Total BOD, Dissolved BOD, TSS, COD TKN, Total Oils & Greases, Total Phosphorous, Ortho Phosphorous, Nitrate, TOC, Dissolved Phosphorus, CNP-Carbon, Nitrogen, Phosphorous)
8.750-243.0	VOC analysis (includes 67 VOC compounds by EPA 8260) For Evaporation Systems

NOTE: Prices above are net prices; no dealer discounts • To expedite shipment of wastewater analysis, multiply net price by a factor of 1.5

WATER MAZE FILTER CAPACITIES

Model Number	Gravel 1/4 x 1/8 8.718-921.0	Garnet 30 x 40 8.718-923.0	Garnet 8 x 12 8.718-924.0	Sand .45-.55 mm 8.718-920.0	Anthracite #1 .60-.80 mm 8.718-922.0	Carbon Activated 8.718-933.0	Element 100 sq/ft 20 micron 8.716-872.0	Element 200 sq/ft 20 micron 8.716-840.0	Element 250 sq/ft 20 micron 8.716-847.0
CLP-5023	100 lb	–	–	150 lb	25 lb	100 lb	–	1	–
CLP-5024	100 lb	50 lb	50 lb	50 lb	25 lb	100 lb	–	–	–
CLP-7023 (current)	100 lb	–	–	200 lb	30 lb	150 lb	–	–	2
(Prior to 2-01-00)	100 lb	–	–	200 lb	30 lb	150 lb	–	2	–
CLP-7033 (current)	350 lb	–	–	450 lb	100 lb	160 lb	–	–	2
(Prior to 4-05-01)	400 lb	–	–	500 lb	100 lb	225 lb	–	–	2
(Prior to 2-01-00)	400 lb	–	–	500 lb	100 lb	225 lb	–	2	–
(Prior to 2-22-99)	100 lb	–	–	200 lb	30 lb	150 lb	–	2	–
CLP-7034	350 lb	300 lb	200 lb	100 lb	100 lb	160 lb	–	–	–
CLP-8034 (current)	200 lb	100 lb	200 lb	50 lb	50 lb	160 lb	–	–	–
(Prior to 8-29-01)	300 lb	–	–	300 lb	50 lb	225 lb	–	–	–
CLP-9044 (current)	350 lb	300 lb	200 lb	100 lb	100 lb	350 lb	–	–	–
(Prior to 8-29-01)	400 lb	–	–	500 lb	100 lb	600 lb	–	–	–
CL-304	100 lb	–	–	200 lb	30 lb	–	1	–	–
Filter Pac I (30-780)	–	–	–	–	–	150 lb	–	1	–
Filter Pac II (30-779) (curr.)	–	–	–	–	–	160 lb	–	–	2
(Prior to 8-31-01)	–	–	–	–	–	225 lb	–	2	–
Filter Pac III (30-778) (curr.)	100 lb	–	–	200 lb	30 lb	150 lb	–	2	2
(Prior to 5-20-04)	100 lb	–	–	200 lb	30 lb	150 lb	–	2	–
Delta-1500 (current)	200 lb	–	–	300 lb	100 lb	100 lb	–	–	2
(Prior to 8-30-01)	300 lb	–	–	300 lb	50 lb	100 lb	–	2	–
Delta-3000 (current)	350 lb	–	–	450 lb	100 lb	150 lb	–	–	2
(Prior to 8-30-01)	400 lb	–	–	500 lb	100 lb	150 lb	–	2	–

All media sold in 50 lb bags, except garnet which is sold in 100 lb bags. Carbon weights are dry weight.

Additives and Defoamers

- Additives for enhanced effectiveness of water treatment systems
- Defoamers and anti-foam agents for use with HBG and HBE evaporators where waste stream includes oils, soaps, organics, etc.



Description	Part #
5600 Defoamer, 55 gallons	8.719-140.0
5600 Defoamer, 5 gallons	8.719-139.0
5600 Defoamer, 1 gallon	8.719-138.0
Defoamer A-32 (for use with coolants), 5 gallons	8.749-779.0
Defoamer A-32 (for use with coolants), 55 gallons	8.749-778.0
Liquid Alum, 5 gallons (20% concentrate)	8.749-550.0
Liquid Alum, 55 gallons (20% concentrate)	8.749-549.0
EC ⁺ Plus, Wash-Water Flocculant, 5 gallons	8.940-586.0
EC ⁺ Plus, Wash-Water Flocculant, 55 gallons	8.725-508.0
No Rust, Evaporator Corrosion Inhibitor, 5 gallons	8.749-782.0
No Rust, Evaporator Corrosion Inhibitor, 55 gallons	8.749-781.0
CoAg ⁺ , Coagulant, 5 gallons	8.725-445.0
CoAg ⁺ , Coagulant, 55 gallons	8.725-446.0
Metal R ⁺ , Coagulant, 5 gallons	8.750-280.0
Metal R ⁺ , Coagulant, 55 gallons	8.750-281.0
Oxi-Maze, Oxidizer, 5 gallons	8.750-499.0
Oxi-Maze, Oxidizer, 55 gallons	8.750-500.0

Quick-Release Detergents

- Quick-release ideal for use in conjunction with water treatment systems
- Low-foaming, formulated specifically for use with pressure washers



Description	Part #
Enviro-Clean, Phosphate-Free Detergent, 5 gallons	8.916-591.0
Enviro-Clean, Phosphate-Free Detergent, 55 gallons	8.916-594.0
Enviro-Clean+Plus, Low Phosphate Detergent, 5 gallons	8.916-589.0
Enviro-Clean+Plus, Low Phosphate Detergent, 55 gallons	8.916-592.0
Enviro-Degreaser, Phosphate-Free Detergent, 5 gallons	8.916-590.0
Enviro-Degreaser, Phosphate-Free Detergent, 55 gallons	8.916-593.0

Filter Media



8.718-920.0



8.718-921.0



8.718-933.0

- Virgin coconut shell activated carbon
- Multi-media provides solids separation

Description	Part #
Sand, 20-40 Size, 50 lb Bag	8.718-920.0
Gravel, 50 lb Bag	8.718-921.0
Anthracite #1 .60-.80mm, 50 lb Bag	8.718-922.0
Garnet, 30 x 40, 100 lbs per Bag	8.718-923.0
Garnet, 8 x 12, 100 lbs per Bag	8.718-924.0
Carbon, 55 lb Bag, Virgin Coconut 8 x 30	8.718-933.0

Clay & Filter Paper



8.718-927.0

- For use with wastewater flocculation systems
- Specially blended for wide range of applications
- **BC-77 DKG:** Ideal for treating oils, metals, detergents
- **BC-77 KAG:** Ideal for treating oils, metals, detergents and to lower the pH
- **BC-77 JSG:** Ideal for treating recycle water
- **FC-77 ORLG:** Granular blend for use with polymer
- **OC-77:** Organophile blend with anthracite to remove emulsified oils and organics

Description	Part #
Clay, BC-77 DKG (50 lb Bag)	8.718-927.0
Clay, BC-77 KAG (50 lb Bag)	8.718-928.0
Clay, BC-77 JSG (50 lb Bag)	8.718-930.0
Organoclay, OC-77 (50 lb Box)	8.718-931.0
Kärcher Clay RM-847 (44 lbs)	6.295-164.0

Sludge Containment



8.719-191.0

- Biodegradable
- Natural fiber material

Description	Part #
Tub, Sludge, w/ Lid, (Black)	8.719-179.0
Bag, Sludge, Qty 1, Biodegradable	8.719-191.0
Grass Catcher Sludge Containment	8.903-602.0

Bioremediation Consumables



8.718-919.0

8.718-914.0

8.718-913.0

- Exclusive to Waterstax
- Biodegradable
- Store in cool location or refrigerator
- Convenient packaging

Description	Part #
Bio-Puck HC, 4-pack with BioNutrient and 4 pit socks	8.718-913.0
Bio-Puck HC, box of 20 pucks	8.749-853.0
Bio-Puck GT, 4-pack with 4 pit socks	8.718-914.0
Biostax 1800, makes 55 gallons	8.718-918.0
Biostax 100 Hawaiian Blend (8 oz Vial), makes 5 gallons	8.718-917.0
Bio-Nutrient, 8 oz bottle	8.718-916.0
Biostax 1800, (Two 8 oz Vials)	8.718-919.0

Air Valves

- Simple design
- Maintenance free
- Self cleaning



8.716-424.0

Description	Part #
Gemu Silverline, Threaded Ends & 2" Female Tail Piece	8.716-422.0
3 Way Ball Assembly, CLP Automatic	8.716-424.0
Solenoid, Air, Gemu Type 322	8.716-426.0

Alpha Coalescing Parts



8.706-671.0

- Oil-Loving polypropylene grids
- Proprietary maze design for optimum oil-water separation

Description	Part #
Grid, Vertical Coalescing, Large, 20.5" x 32.5"	8.706-666.0
Grid, Mini Coalescing, Small, 17" x 16"	8.706-668.0
Grid, Horizontal Coalescing	8.706-671.0
Suitcase, Pom Pom Filters	8.706-672.0
Pom Pom, Sorbaid (Water Maze)	8.706-673.0
Grid, Horizontal Coalescing (Delta 500)	8.706-675.0
Strap, Coalescing Grid, 60"	8.709-338.0
Strap, Coalescing Grid, 112"	8.709-339.0
Strap, 84", Filter	8.709-342.0

WB Blowers & Draft Inducer

- External motor
- Aluminum fan



8.715-192.0

Description	Part #
Draft Inducer D-3, HBG/HBE	8.715-192.0

HBG Burners



8.717-100.0

- Industrial duty
- Simple operation

Description	Part #
Wayne, P250 AFEP, 115V, HBG-15 NG	8.717-099.0
Wayne, HSG-400, HBG-30	8.717-100.0
Wayne, P250 AFEP, 115V, HBG-15 LPG	8.717-101.0

HBG Burner Parts & Elements

- Industrial applications

Description	Part #
Ignition Module, HBG-15	8.717-990.0
Valve, Gas Burner HBG-15	8.717-991.0
Valve, Gas White Rodgers HBG-30	8.717-992.0
Control, Primary Safety, w/ 30 Sec Pre-Purge HBG-30	8.718-006.0

Exhaust Stacking



8.717-742.0

Description	Part #
Flue Adapter, 6" HBG-15, No Flange	8.717-738.0
Flue Adapter, 10" HBG-30, No Flange	8.717-739.0
Shield, Rain, 6" Flue Pipe, Water Blaze	8.717-740.0
Shield, Rain, 10" Flue Pipe, HBG	8.717-742.0
Shield, Rain, 12" Flue Pipe, WB-120	8.717-743.0

Flow Meters & Gauges

- Simple design
- High impact plastic

8.712-136.0

Description	Part #
Flowmeter 1.5"	8.712-136.0
Pressure, 0-100 1/4" Bottom	8.712-154.0
Pressure, 0-10 psi	8.712-155.0



Filter Tanks and Elements

- Roto-molded for strength
- Corrosion and UV Resistant
- Self cleaning laterals
- Patented water distribution system



8.723-202.0



8.723-206.0



8.723-217.0

Description	Part #
Media, 3.1 sq ft, CrystalFlo II	8.726-028.0
Media, 4.9 sq ft, Tagelus 100D	8.726-029.0
Filter Tank, 125 sq ft, w/ element, StaRite	8.723-204.0
Filter Tank, 200 sq ft, w/ element, StaRite	8.723-205.0
Filter Tank, 300 sq ft, w/ element, StaRite	8.723-206.0
Cartridge Element , 125 sq ft, StaRite	8.723-215.0
Cartridge Element , 200 sq ft, StaRite	8.723-216.0
Cartridge Element , 300 sq ft, StaRite	8.723-217.0
Element, 200 sqft, 20 Micron, Jacuzzi*	8.716-840.0
Element, 250 sqft, 20 Micron, Jacuzzi*	8.716-847.0
Element, 200 sqft, 5 Micron, Jacuzzi*	8.716-871.0
Element, Filter, 100 sq ft, Jacuzzi*	8.716-872.0

*Limited supply available; contact Customer Service for availability status

ORP/pH Controller Parts



8.716-905.0



8.716-906.0



8.716-990.0

- ORP/pH probes resistant to fouling
- Original replacement parts

Description	Part #
Tubing, 1/4" ID x 7/16" OD, Norprene	8.711-736.0
Sensor, pH	8.716-905.0
Sensor, ORP	8.716-906.0
Fitting, Compression 1/2"	8.716-970.0
Collar VSP-20, for ORP/pH Control	8.716-974.0
Kit, VSP-20 Parts, Suction/ Discharge Kit	8.716-979.0
Tubing, ORP/pH Controllers 15 ft Opaque	8.716-984.0
Injector, I.P.F. ORP/VSP 20 Metering	8.716-986.0
Controller Only, ORP/pH Digital CH250	8.716-990.0
Chlorinator, Model #910	8.709-144.0
pH-only Controller w/ probe, 120V, stand alone	8.716-989.0

Testing Kits

- Top quality
- Simple to use



8.720-010.0

Description	Part #
Chlorine Test Strips	8.720-009.0
pH Test Strips	8.720-010.0
Flowmeter, Ozone	8.712-138.0
EC+Plus Wastewater Test Kit	8.749-144.0

Ozone Generators



8.905-715.0

- High output ozone for effective oxidation of bacteria and control of odor
- Ultra-violet ozone generation
- 1-, 2- and 4-bulb configurations

Description	Part #
Series 101 (120V)	8.905-707.0
Series 101 (220V)	8.905-709.0
Series 200 (120V)	8.905-714.0
Series 200 (220V)	8.905-715.0
Series 400 (120V)	8.905-716.0
Series 400 (220V)	8.905-717.0

See page 5 for complete Ozone Generator with circulation system

Above models require power supply and/or circulation system

Ozone Generator Parts

- Replace with the best
- Direct replacement UV lamps
- CD maintenance kit



6-0534

Description	Part #
Valve, Ozone Meter, 1/4" Plastic	8.707-321.0
Valve, 3/8" Tubing Check, Kynar	8.707-355.0
Injector, Ozone w/o Check Valve	8.709-431.0
Flowmeter, Ozone	8.712-138.0
Ballast, 120V Ozone Generator	8.716-588.0
Ballast, 220V Ozone Generator	8.716-590.0
Connector, 4 Pin Plug	8.716-592.0
Lamp, Ozone Replacement	8.716-600.0

Scot Pumps & Repair Kits

- Heavy-duty cast iron body
- Stainless steel impeller

8.715-402.0



Description	Part #
1-1/2 hp 208/230/460V 3PH, 20 GPM/ 50 psi	8.715-400.0
2 hp 208/230V 1PH, 50 psi	8.715-402.0
2 hp 208/230/460V 3PH, 32 GPM/ 50 psi	8.715-404.0
2 hp 115/230V 1PH, Stainless Steel	8.715-357.0
Seal/ O-Ring Kit, Filter Pump (Jacuzzi)	8.716-814.0
Kit, Beta Pump Repair (Jacuzzi)	8.716-816.0

Grundfos Pumps & Repair Kits



- Application specific design
- Long lasting

8.716-765.0

Description	Part #
1/2 hp Sump Stainless Steel, AP-12,120V	8.715-364.0
Kit, Wear Plate (Grundfos Sump Pump)	TBD
Kit, Gasket, Sump Pump	TBD
Shaft Seal, Jet Pump	8.716-765.0
Kit, O-Ring & Gasket, Jet Pump	8.716-766.0
Kit, O-Ring, Vit. G-FOS, #7 Buna, 13, 18, 19	8.716-767.0
Seal, John Crane Type 6, 5/8" Viton/Carbon/Ceramic Seat	8.716-768.0

Pumps & Repair Kits — Jacuzzi Cyclone

Description	Part #
3/4 hp 115/230V 1PH, Cyclone	8.715-383.0
1/2 hp 115/230V 1PH, Cyclone	8.715-382.0
REPAIR KITS	
3/4 hp Cyclone, Impeller Kit	8.716-796.0
3/4 hp Cyclone, Impeller Only	8.716-793.0
1/2 hp Cyclone, Impeller Kit	8.716-795.0

Pumps & Repair Kits — StaRite

Description	Part #
2 hp 230V 1PH, StaRite	8.723-198.0
3/4 hp 115V 1PH, Ozone	8.917-759.0
3/4 hp 230V 1PH, Ozone	8.917-760.0
3/4 hp 230V 1PH, With Bakset, StaRite	8.723-175.0
3/4 hp 208-230/460V 3PH, Ebara	8.723-219.0
REPAIR KITS	
Shaft Seal Kit (for 8.723-198.0 only)	8.749-351.0
Mech. Seal Ebara (For 8.723-219.0)	8.750-017.0

Little Giant Pumps



- Heavy-duty cast iron
- Stainless steel impeller

8.715-367.0

Description	Part #
Sump, 1/2 hp 120V	8.715-367.0
Sump, 1/2 hp 230V/ 1PH	8.715-368.0
Sump, 1/3 hp 220V	8.715-369.0

Ebara Pumps



- Heavy-duty impeller
- Stainless steel

8.715-438.0

Description	Part #
Sump, 1/2 hp 230V/ 3PH	8.715-438.0
Sump, 1/2 hp 460V/ 3PH	8.715-439.0

Peristaltic Metering Pumps

- Roller cam designed
- Hose compression pump



8.715-378.0

Description	Part #
VSP20 Metering, 24V	8.715-378.0
VSP20 Metering 120V	8.715-379.0

ARO Pump

- Heavy-duty air diaphragm
- Corrosion resistant



8.715-278.0

Description	Part #
Air Diaphragm, 1/2" Polypropylene	8.715-278.0
Air Diaphragm, 1/2" Stainless Steel	8.715-279.0

Regulators

- Preset and adjustable available
- Heavy-duty

8.716-420.0



Description	Part #
Regulator, Pressure w/ Gauge	8.716-420.0
Filter, Coalescing	8.716-421.0
Regulator, Rockwell 3/4" 143-80 WB	8.717-748.0

Tanks & Pressure Tanks

- Internal bladder
- Compact design

8.719-176.0



Description	Part #
Pre-pressurized, 4.4 gal	8.719-176.0
Pressurized, 20 gal	8.719-178.0

HBG/HBE Tanks/ Combustion Box

- Cast in place fiberfrax insulation

CAUTION: Double check operators manual to verify part number for sparger tube as they vary with different models



8.913-198.0

Description	Part #
Insulation, 1" x 2" HBG, /ft	8.717-434.0
Tank, HBG-15/99, Steel	8.913-195.0
Tank, HBG-15, 316L Stainless Steel	8.913-196.0
Tank, HBG-15/99, AL-6XN	8.913-197.0
Tank, HBG 30, Mild Steel	8.913-223.0
Tank, HBG 30, AL-6XN	8.913-225.0
Firebox, HBG-15	8.913-198.0
Firebox, Insulation, HBG-30	8.913-236.0

Water Blaster Unloader

- Preset and adjustable available
- Heavy-duty



Description	Part #
Unloader	8.715-513.0

A GUIDE FOR MATCHING SUMP PUMPS TO WATER MAZE SYSTEMS

Models	Grundfos 1/2HP, 120V 8.715-364.0	Little Giant 1/2HP, 120V 8.715-367.0	Little Giant 1/2HP, 230V/1ph 8.715-368.0	Little Giant 1/3HP, 230V/1ph 8.715-369.0	Ebara SS 1/2HP, 230V/3ph 8.715-438.0	Ebara SS 1/2HP, 460V/3ph 8.715-439.0
CLP-7034A			■			
CLP-7034B					■	
CLP-7034C						■
CLP-5024A				■		
CLP-5024B					■	
CLP-5024C						■
CL-603A			■			
CL-600D		■				
CL-304A				■		
Alpha-1500D	■					
Alpha-3100D	■					

Alarm

- 90 decibel
- Piezo design



Description	Part #
Alarm, 24V Ac, Panel Mount	8.716-266.0

Electrical Switches



9.802-451.0

- Waterproof
- Soft rubber feel
- Various designs

Description	Part #
Rocker, Carling w/ Green Lens	9.802-451.0
Curvette, HBG 2-position	9.802-453.0
Curvette, 2-position Wide Switch	8.716-051.0
Curvette On-Off-On, HBG 3-position	8.716-052.0
Momentary Push, small	8.716-091.0
Micro Switch, Roller Lever	8.716-630.0
Block, Contact, N/C, CH E22B1	9.802-534.0
Block, Contact, N/O, CH E22B2	9.802-535.0
2-pos, CH E22Vb51, Carling w/ Light	8.716-718.0
3-pos, CH E22YED215-1, Carling w/ Light	8.716-719.0
Switch/ Gauge, Capsu-Photohelic Press, 0-10"	8.718-200.0

Float Switches



8.716-142.0



8.716-632.0

- Corrosion resistant for long life
- Adjustable tethered floats

Description	Part #
Float, N/O Tethered (Black)	8.716-142.0
Float, N/C Tethered (Gray)	8.716-143.0
Liquid Level, M-5000 HBE/HBG	8.716-294.0
Liquid Level, LS1800, Alpha	8.716-632.0
Sensor, Capacitance, 3-point, WB	8.716-300.0

Fuses

- Various sizes
- Industry standard design

Code	Max Voltage	Amps	Part #
FNM1/2	250V	0.5	9.802-463.0
FNM1	250V	1.0	8.716-173.0
FNM2-1/2	250V	2.5	9.803-977.0
FNM7	250V	7.0	8.716-194.0
FNM8	250V	8.0	9.802-460.0
<hr/>			
FNQ-R-3	600V	3.0	9.802-465.0
<hr/>			
KTK-R2	120V	2.0	9.803-663.0
KTK-R4	600V	4.0	8.716-180.0
KTK-R5	600V	5.0	9.804-050.0
<hr/>			
MDL1/2	120V	0.5	8.716-170.0
MDL2-1/2	24V	2.5	8.716-174.0

High Temp Cut-Out Switch

- High temperature rated



8.712-175.0

Description	Part #
Switch, Manual Reset, 220°F WB	8.712-172.0
Hi Limit Control, 700°F, HBG (Mild Steel Tank)	8.712-174.0
Thermocouple, SS Sheath, 34" Long, Type K, HBG	8.712-175.0
Hi Limit Control, 900°F, HBG (SS Tank)	8.712-176.0

Indicator Lights

- Long lasting
- High intensity bulb



8.716-095.0

Voltage	Color	Part #
125V	Red	8.716-095.0
125V	Green	9.802-455.0
125V	Amber	8.716-408.0
125V	Blue	8.716-409.0
28V	Blue	9.803-650.0
28V	Green	9.803-652.0

Pressure Switches



8.716-413.0

- Adjustable set point
- Stainless body
- Diaphragm design

Description	Part #
Square D, N/C Use w/ 2-10893, 2-1072	8.716-154.0
PM11120A-1PF, 1 psi	8.716-156.0
PM11160X-15PR, 15 psi	8.716-158.0
Barksdale, Air Proving	8.716-413.0

Relays



9.802-466.0



9.802-468.0

- Din rail mountable

Description	Part #
Relay Socket, SH3B05*IDEC	9.802-466.0
Relay, 120V, RH2B-UL-AC120	9.802-468.0
Relay Latch 2, RH2LBUAC120*IDEC	9.802-469.0
Relay, Power Omron G4B112T1FDCUSRAC120	8.716-235.0
Relay, Sky Mfg. 120V # SKHT-1X	8.716-264.0
Base, Relay, SH2B-05, IDEC	9.802-467.0

Solenoids

- Preset and adjustable available
- Heavy-duty
- Diaphragm seat
- Corrosion resistant

8.716-697.0



Description	Part #
Coil, 120V, Water Side	8.716-689.0
Valve, Parker, Water Side	8.716-690.0
Valve, Parker, Air Side	8.716-691.0
Solenoid Coil, 120V, Air Side	9.802-533.0
Solenoid, Water Maze, PVC 24V Rainbird	8.716-697.0
Solenoid, Valve 120V, Hit 310-100-1	8.716-700.0

Timers



8.716-237.0

- Various designs
- User friendly

Description	Part #
Hour Meter, 115VAC 60hz	9.802-283.0
Timer, Red Lion	8.716-236.0
Counter, Red Lion	8.716-237.0
Timer, Variable Time	8.716-251.0
Base, Timer IDEC Socket	8.716-252.0
Timer, 24 Hour Pin, 120V 20A	8.716-253.0
Controller, Automatic Maint, CLP-7034	8.716-438.0

Transformers



9.802-550.0

- Heavy-duty fuse protected

Primary Voltage	Secondary Voltage	Size	Part #
208/120	.500KvA	50/60 Hz	8.716-873.0
240/480V	120/240V	.500KvA	9.802-550.0
240/480V	120V	.050KvA	9.802-551.0
120/240V	24V	.050KvA	9.802-553.0
550V/575/600V	115V	.050KvA	9.803-668.0
120/240V	24V	.100KvA	8.716-904.0
120/24V/30VA HBG-15			8.717-985.0
Ignition 612-6A020E 120V WB			8.718-177.0

Ball Valves

- PVC Sch 80
- Heavy-duty



Description	Part #
1" Slip x Slip	8.707-359.0
1-1/2" Slip x Slip	8.707-361.0
1-1/2" FPT x FPT Molded	8.707-362.0

Brass Parts

- Precision threads
- Long lasting



Description	Part #
Nipple, 1/4" Close	8.706-777.0
Nipple, 1/4" Hex	8.706-780.0
Nipple, 1/2" JIC x 1/2" MPT Pipe	9.802-128.0
Nipple, 3/4" JIC x 3/4" Pipe	8.706-899.0
Elbow, 1/2" JIC x 1/2", 90°	9.802-131.0
Elbow, 3/4" SAE x 3/4", 90°	9.803-557.0
Hose Barb, 1/4" Barb x 1/4" Pipe, 90°	8.706-958.0
Swivel, 1/2" MPT x 3/4" GHF w/ Strainer	9.802-146.0
Swivel, 3/4" SAE Fem, Push-On	9.802-152.0

Check Valves

- PVC Sch 80
- Floating ball design



Description	Part #
1.5" Ball, PVC, Slip x Slip	8.707-297.0
1" Ball, PVC, Slip x Slip	8.707-300.0
1/2" Ball, PVC, FPT x FPT	8.707-298.0
1.5" Swing, PVC, Slip x Slip	8.707-299.0
2" Swing, Brass, FPT x FPT	8.707-239.0
3/8" Tubing, Checkvalve	8.707-355.0
1/4" NPT, FPT x FPT	8.707-356.0

Push-On Hose

- Nylon braided
- Heavy wall
- UV protected



Description	Part #
1/4", Push-On, Fuel Line, /ft	9.802-254.0
1/2", Push-On, /ft	9.802-259.0
3/4", Push-On, /ft	9.802-261.0

PVC Adapters



- Heavy-duty schedule 80

Description	Part #
1" MPT x Slip	8.706-409.0
1.5" Slip x MPT	8.706-441.0
1-1/4" Slip x MPT	8.706-442.0
Female, 1" Slip x FPT	8.706-444.0
Female, 1-1/4" Slip x FPT	8.706-445.0
2" Slip x MPT	8.706-451.0

PVC Bulkheads

- Easy to install
- Adjustable seal tite design



Description	Part #
2" NPT, Polypropylene	8.706-479.0
3" FPT x FPT	8.706-480.0
1/2"	9.802-051.0
3" FT x FT, Polypropylene	8.706-483.0
1", Polypropylene	8.706-484.0
1-1/2" FPT x FPT, 872-015	8.706-486.0
1-1/2", Polypropylene	8.706-490.0
3/4", Polypropylene	9.802-052.0
Strain Relief, Straight, Liquid Tite	9.802-515.0

PVC Bushings

- Heavy-duty schedule 80



Description	Part #
2" x 1 1/2" MPT x FPT	8.706-403.0
1-1/2" x 1" MPT x FPT	8.706-404.0
1-1/4" x 1" MPT x FPT	8.706-405.0
1/2" x 1/4" MPT x FPT	8.706-407.0
1" x 3/4" MPT x FPT, "Speers"	8.706-412.0
1.5" MPT x 1.25" FPT	8.706-415.0
2" MPT x 3/4" FPT	8.706-416.0

