

Float Tank

LANDA®



- 3.5 gallon capacity
- 22" x 13-1/2" x 5"
- Heavy 3/16" durable plastic
- Convenient mounting tabs
- Complete assemblies available, call with model number

New Part No.	Part No.	Description
9.802-084.0	2-01164	Universal Plastic Float Tank
8.912-233.0	95-07121207	Lid & Hinges

Fuel Tanks

LANDA®



2-011501



2-011502

- International Color coded for gas (red) and diesel (Green)
- Rugged fill neck cap with vent
- Semi transparent shows fuel level
- Heavy-duty 14 gauge

New Part No.	Part No.	Description
8.706-603.0	2-011501	10 gal Poly, Yellow, Skids
8.706-604.0	2-011502	5 gal Poly, Red, Skids
8.706-606.0	2-011503	10 gal Poly, Red, SGHW
8.706-626.0	2-01154	6 gal Poly, Yellow, VHW/MVP/MVC
8.706-627.0	2-011541	6 gal Poly, Red, MPG

NOTE: Cap not included with tank

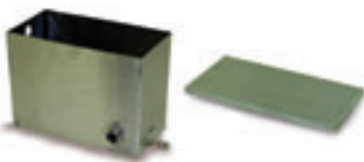
Molded Plastic Float Tanks



- Molded polypropylene
- 7 liter size: 13" x 5" x 6"
- 1 gallon size: 10" x 5" x 8"
- No holes for max flexibility
- 1 gallon tank has tight-fitting lid, included
- 7 liter tank lid is snap-on & sold separately

New Part No.	Part No.	Description
8.710-026.0	343002	7-Liter Tank Only
8.710-027.0	343003	7-Liter Tank Lid
8.710-028.0	343004P	1-Gallon Tank with Lid

Stainless Steel Float Tank



- Fully welded and water tight
- 2.8 gallon capacity
- 12" x 9" x 6"
- 16 gauge #303 stainless steel
- 1/2" full coupling (SS) inlet/outlet
- Convenient mounting tabs

New Part No.	Part No.	Description
8.710-029.0	343006	Stainless Steel Float Tank
8.710-034.0	343016	Stainless Steel Lid

9 Gallon Fuel Tank



- 9 gallon black plastic tank
- Strap or Bolt mount (4/5/16" inserts in bottom)
- Metal inset 3/8" inlet/return lines
- Black - Crosslinked PE
- Vented fuel cap
- Filler neck doesn't extend beyond tank wall
- Compact Size: 19-3/4" L x 12" W x 10-1/2" H

New Part No.	Part No.	Description
8.710-142.0	344735	9 Gallon Fuel Tank

NOTE: Includes fuel cap

Fuel Tanks



8.749-322.0



8.749-321.0



8.749-324.0



8.749-323.0

- Seamless one-piece construction of marine grade, UV-protected polyethylene
- Built-in reserve (When gauge reads Empty, tilt to access additional fuel!)
- Rugged fill neck cap with vent
- 90° fuel withdrawal fitting
- Easy-to-read sight gauge
- 4 shapes & capacities from which to choose

New Part No.	Part No.	Gallons	Height	Length	Width
8.749-322.0		6.5	10"	21.5"	13.75"
8.749-324.0		9	10"	29.5"	13.75"
8.749-321.0		12	14.5"	23"	14"
8.749-323.0		12	11.5"	24"	18"

*Built-in Carrying Handle

Battery Boxes w/ Cover, Marine Style

Protect batteries on pressure washers, boats or other industrial equipment.



- Attractive molded polypropylene
- Complete with hold-down cleats and strap for cover

Small:
L: 8-1/2" W: 6" H: 8-1/2"
Large: L: 11-1/4"
W: 7-3/4" H: 10-3/4"

New Part No.	Part No.	Description
9.802-090.0	306625	Small Box
9.802-075.0	306627	Large Box

Fuel Caps

LANDA®



New Part No.	Part No.	Description
9.802-089.0	2-01167	Threaded Cap (Fits All Poly Fuel Tanks)
8.706-629.0	2-01157	Cap, 14" with Fuel Gauge, PHW & PGHW Metal Tanks
8.706-637.0	2-01158	Cap, 18" with Fuel Gauge, SGHW Metal Tanks
9.802-082.0	2-01153	Cap, Plastic, Twist Lock, PHW Metal Tanks

Fuel Caps



- For gas or diesel fuel tanks
- Fits standard 2-1/4" fuel necks

New Part No.	Part No.	Description
8.710-137.0	344725	Fuel Cap

Hand Tote II

Strong. Lightweight. Versatile.



- Strong 1" square steel tubing
 - Lightweight – only 8 pounds!
 - Rubber mounting feet for stability
 - Use with either gas or electric direct drive units
 - Compact size – 12" W x 19" H x 17" D
 - Durable gloss black polyurethane finish
- Electric:** 1.5 HP - 5.0 HP 56C Motor
- Gas Eng:**
4.0 HP - 6.5 HP Honda
3.0 HP - 6.0 HP B&S / B&S Vanguard engines

New Part No.	Part No.	Description
8.905-567.0	565230X	Hand Tote II

Complete Wheels



- Replacement for all LANDA machines
- High quality pneumatic, and semi pneumatic
- Fits 5/8" shaft, except 4-0305 fits 1/2" shaft

New Part No.	Part No.	Description
8.711-901.0	4-0304	10" Mag
9.802-270.0	4-0303	10" Steel Rim with Tube
9.802-271.0	4-0307	13" Steel Rim

Tubes & Bearings



- Replacement for standard LANDA machines

New Part No.	Part No.	Description
8.712-767.0	4-03031	10" Inner Tube
8.711-923.0	4-03172	12" Inner Tube
8.711-921.0	4-03162	13" Inner Tube
8.700-484.0	4-03910	5/8" Wheel Bearing
8.700-486.0	076505	3/4" Bore Bearing
8.700-485.0	076504P	5/8" Nylon Bearing

Caster Wheels



- Easy pivot of machines
- Locking or non-locking
- 360 degree swivel

New Part No.	Part No.	Description
8.711-908.0	4-031509	3" Grey, WaterJet
9.802-275.0	4-031513	5" Swivel Caster, SJ Units
9.802-276.0	4-031514	5" Swivel Caster, with Brake, SJ Units

Rubber Parts



New Part No.	Part No.	Description
9.802-064.0	2-0103	1/8" Grommet (Holds Nozzles in Frame)
9.802-066.0	2-01041	Foot Pad, Soft, PG
8.706-557.0	2-0107	Bellows, Leg (Boot), PG
9.802-067.0	2-0108	Bumper Pad, Engine, PG
9.802-069.0	2-01101	Handle Grip, 1" Waffle
9.803-532.0	2-01011	Vibration Isolator, 5/16"